

Smarter, Cheaper, Better

Coordinating land use practices and transportation policies to get better economic and environmental outcomes

Our mission

Promote development that creates healthy communities while conserving natural areas, family farms, woodlands and water.

Or

Helping Minnesota Grow Without
Wrecking the Place

What is a sustainable community?

A Sustainable Community is an urban, suburban or rural community that has more housing and transportation choices, is closer to jobs, shops or schools, is more energy independent and helps protect clean air and water.

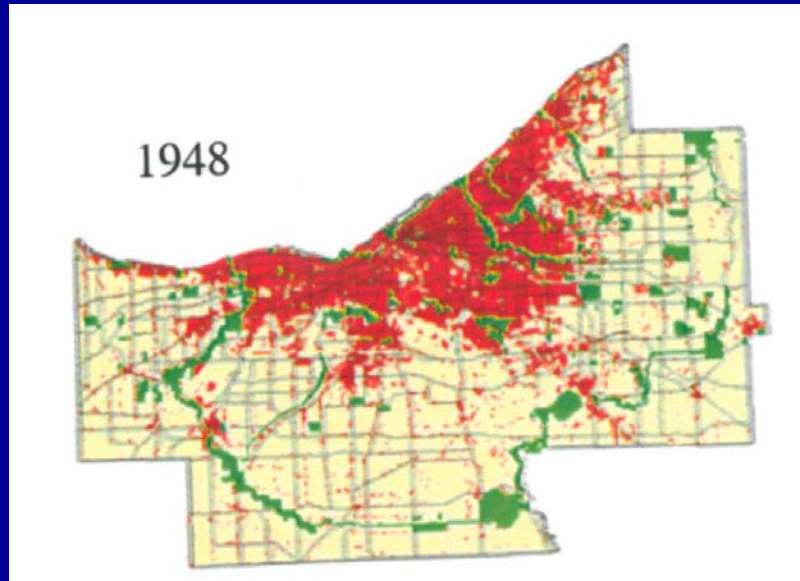
- Balances economic and natural assets to meet the diverse needs of residents now and in the future
- Uses resources efficiently
- High quality of life attracts residents and businesses



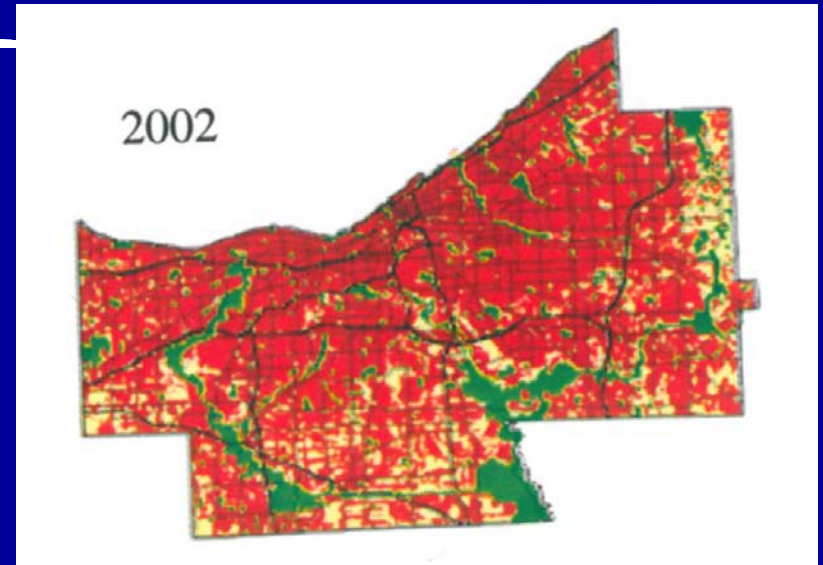
Not Your Mama's Minnsesota



Sprawl: Higher Costs for the Same Population



1950: 1,389,582



2002: 1,393,978

Cuyahoga Co Land Use Maps – Cuyahoga Co Planning Commission

Smart Growth Saves Infrastructure Costs

- Lowers per capita infrastructure costs;
- Puts existing capacity to work; and
- Maintains infrastructure before repair gets expensive.

Smart Growth Saves

Billions of dollars, nationally

	Water & Sewer Laterals Required	Water & Sewer Costs (billions)	Road Lane Miles Required	Road Land Miles Costs (billions)
Sprawl Growth Scenario	45,866,594	\$189.8	2,044,179	\$927.0
Compact Growth Scenario	41,245,294	\$177.2	1,855,874	\$817.3
Savings	4,621,303	\$12.6 (10.1%)	188,305	\$109.7 (6.6%)

Sprawl Costs: Economic Impacts of Unchecked Development, Robert W. Burchell, Anthony Downs, Barbara McCann and S. S. Mukherji, Island Press, 2005

Smart Growth Saves Billions of dollars nationally

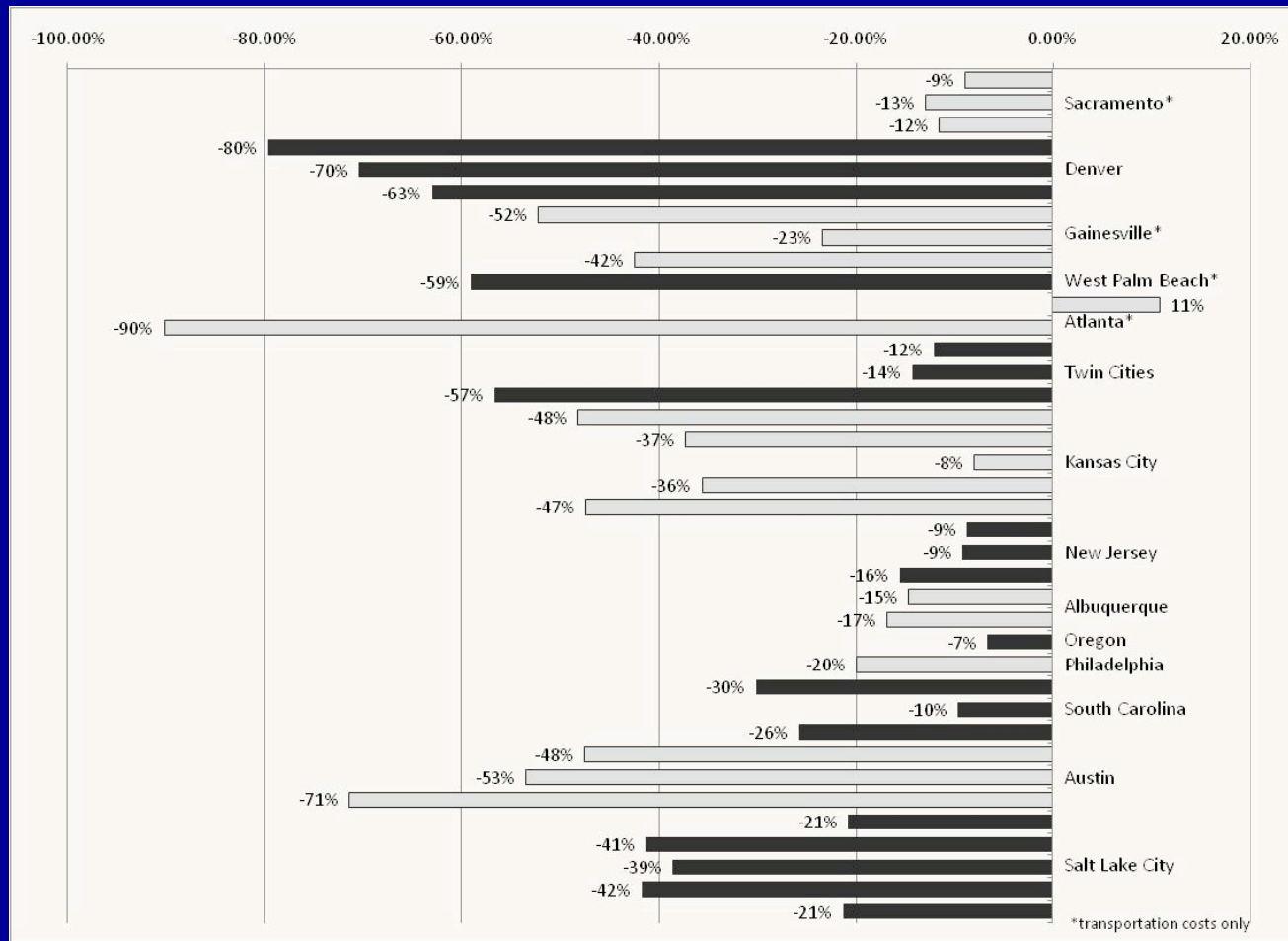
Shifting roughly 25% of projected low density growth to more compact development would result in a national savings of \$4.2 billion, or 3.7%, for roads, water and sewer operations, and maintenance over a 25 year period.

Source: "The Costs of Sprawl—2000," Robert Burchell, et. al., Transportation Research Board (2002)

Smart Growth Saves
Other Infrastructure Costs

- Fire and Police Stations
- Schools
- Libraries
- Parks
- Hospitals

Smart Growth Saves Money on Infrastructure in Every Region

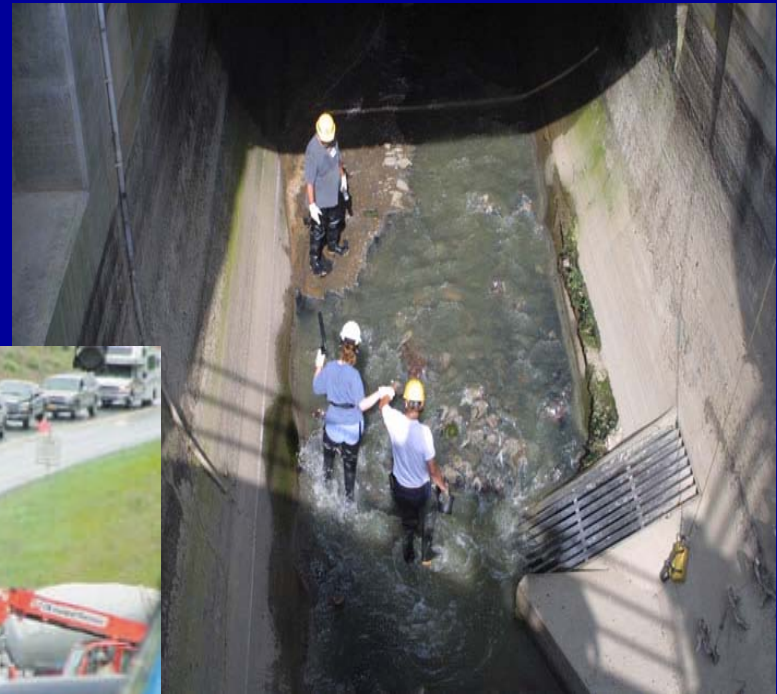


Source: "The Best Stimulus for the Money, Briefing Papers on the Economics of Transportation Spending, Briefing Paper IX, Compact Development, Sprawl, and Infrastructure Costs," Bartholomew, Keith, et. al., Smart Growth America and the University of Utah (2009).

Smart Growth Saves More Money Through Redevelopment and Infill

Dwelling Units per Gross Acre	Raw Land	Infill	Reuse
2	\$5,512		
4	\$4,189	\$3,351	\$3,561
6	\$3,707	\$2,966	\$3,151
8	\$3,485	\$2,788	\$2,962
16	\$3,058	\$2,447	\$2,600

Smart Growth Saves Money On II. Costs of Services



Smart Growth Reduces Costs of Services

Type of Cost	Higher Density	Medium Density	Rural Cluster	Rural Low Density
	4.5 Units/Acre	2.67 Units/Acre	1 Unit/Acre	0.2 Units/Acre
Schools	\$3,204	\$3,252	\$4,478	\$4,526
Roads	\$36	\$53	\$77	\$154
Utilities	\$336	\$364	\$497	\$992
Total	\$3,576	\$3,669	\$5,052	\$5,672
Increased Cost	N/A	3%	41%	59%

Apples-to-apples comparison of a prototypical community of 1,000 units housing 3,260 people, including 1,200 students.

Smart Growth Saves Water And Sewer Service Costs

- For compact, small-lot development, each additional mile from city center adds roughly \$50,000 to 30 year cost of providing water and sewer services.
- For low density, large-lot development, each mile adds roughly \$122,000 to 30 year cost.

Smart Growth Saves Money On Busing Kids To School



Hubbard Lake Elementary School, Hubbard Lake, Michigan.
"Outstanding in Its Field"

Smart Growth Saves Money By

III. Fixing It First

- Expanding regions pay for new infrastructure by diverting money from existing communities.
- Keeping money in existing communities:
 - Avoids spiraling costs of deferred maintenance;
 - Strengthens existing communities and improves quality of life; and
 - Provides the foundation for sustainable economic growth.

Fixing It First Saves
Costs of Replacement

“Every \$1 spent in keeping a good road good precludes spending \$6-\$14 to rebuild one that has deteriorated.”

The American Association of
State Highway and Transportation Officials

A HEAVY LOAD:

The Combined Housing and Transportation Burdens of Working Families



October 2006

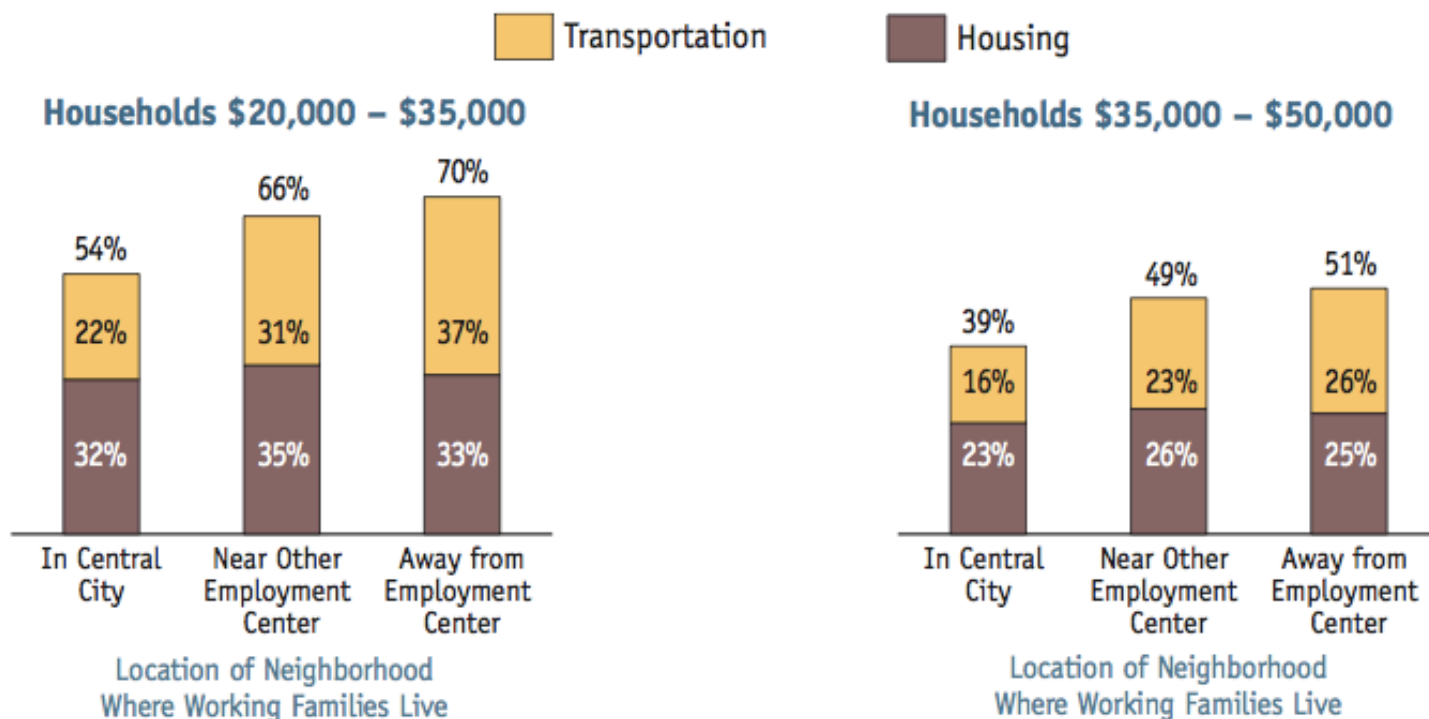


Transportation Costs Are a Big Portion of Household Budgets

- The average household spends 51% of income on the combined costs of housing & transportation; both costs are increasing.
- The average household spends 19% of income on transportation.
 - Households in auto-dependent neighborhoods spend 25% on transportation.
 - Households with good transit access spend only 9%.
- This savings can be critical for low-income households:
 - Very-low-income households spend 55% of income or more.

Transportation Costs Hurt Working Families

Share of Income Spent on Housing and Transportation



Source: Center for Neighborhood Technology calculations.

NOTE: Employment centers are job locations with a minimum of 5,000 employees.

Smart Growth Saves Transportation Costs

THE ECONOMIC BENEFITS OF LOCATION EFFICIENCY

The savings associated with living in more compact communities add up quickly for households and regions alike.

Data Source: CNT H+T Index and MPO websites

MPO Region	Sample Dispersed Neighborhood*	Sample Compact Neighborhood*	Difference in Annual Household Transportation Costs**	Difference in Annual Regional Transportation Costs (millions)***
Austin, TX ▶	Round Rock	Old West Austin	\$2,310	\$716
Boston, MA ▶	Braintree	Somerville	\$3,850	\$613.5
Charlotte, NC ▶	Sterling	Dilworth	\$1,700	\$239.8
Chicago, IL ▶	Schaumburg	Oak Park	\$3,110	\$1,110.2
Cincinnati, OH ▶	Mitford	CUF Neighborhood	\$3,050	\$236.3
Denver, CO ▶	Arvada	Washington Park	\$2,240	\$661.3
Little Rock, AR ▶	Sherwood	Pulaski Heights	\$1,580	\$79.9
Minneapolis, MN ▶	Orono	Seward	\$1,830	\$345.1
Newark, NJ ▶	Butler	Montclair	\$2,300	\$550.8
Phoenix, AZ ▶	Gilbert	Encanto	\$3,610	\$2,144.3
Portland, OR ▶	Troutdale	Roseway	\$2,230	\$492.2
San Francisco, CA ▶	Antioch	Rockridge	\$2,780	\$1,126.8

*Representative compact and dispersed neighborhoods used to cost out the savings associated with greater efficiency.

**Household savings of the representative compact community over the representative dispersed community.

***Regional savings if 50% of projected household growth through 2030 as listed on the MPO website had H+T savings of the compact over the dispersed community.

Smart Growth Saves Money

By Reducing Transportation Costs

- Portland, Oregon: a 4-mile reduction in VMT per capita when compared to the national average translates into an estimated \$2.6 billion in regional household savings on transportation and time costs.
- Chicago: A 2.1-mile reduction in VMT when compared to the national average translates into household savings of \$5.5 billion on transportation and time costs.
- If the 51 metropolitan areas in the US were to decrease their VMT per capita by just 1 mile per day, the estimated personal savings to households in fuel and maintenance alone would amount to nearly \$29 billion a year.

Smart Growth Promotes Economic Growth

- Attracts private investment
- Attracts employers and workers
- Supports small businesses
- Improves access to jobs
- Increases property values
- Provides greater stability in times of economic uncertainty and rising energy costs
- Responsive to demographic shifts

Smart Growth Increases

I. Economic Development



Public investments in smart growth stimulate private investment.

Smart Growth Promotes Vibrant Economies

- Quality-of-place investments give regions a competitive advantage in the new global economy.
- Economic development that incorporates smart growth strategies is more successful at attracting and retaining a talented workforce and new business.

Smart Growth

II. Attracts Talent

- In the last U.S. census, almost two-thirds (64%) of college-educated 25- to 34-year-olds said they looked for a job after they chose the city where they wanted to live.
- Regions with a competitive advantages are those that can generate, retain and attract the best talent.

Attracting Talent:

Generation Y Demands Clean, Green Places

- CEOs for Cities conducted focus groups of college-educated recent movers in the 25 to 34 year-old age group & found a consistent theme:

“They want to live in places that they can be proud of, part of, and that are clean and green”

Attracting Talent:
Young Professionals Demand...

- Opportunities for social interaction;
- Environmental quality—literally, the quality of one's surroundings, including both the built and natural environment;
- Abundance of cultural amenities;
- Transportation options, including convenient public transportation.

Smart Growth Draws

IV. Successful Retail and Small Business

Small business is the primary engine for economic growth in the United States, and many of them rely on people walking by.



Case Study: Lodi, CA

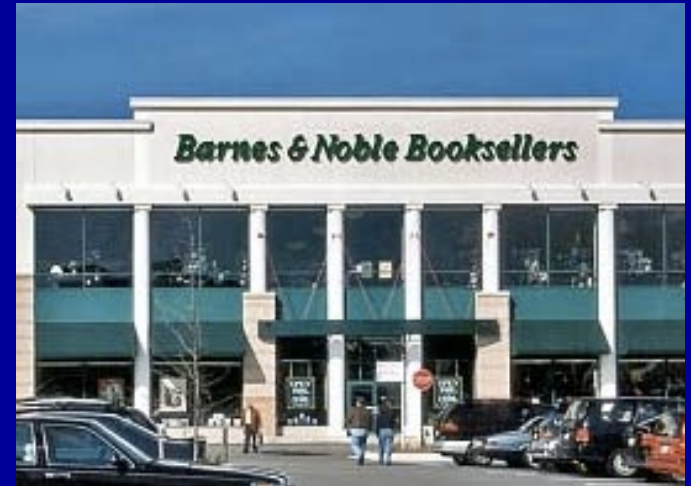
Walkability Attracts and Sustains Small Business

- Town of 60,000 launched \$4.5M pedestrian-oriented project
- Sidewalks widened, intersection curb bulb-outs, street trees, lighting, benches
- Helped attract 60 new businesses, decrease vacancy rate from 18% to 6% and increase downtown sales tax revenue 30%

Case Study: Maryland

Smart Growth Delivers More People

Rockville store



A tale of two book stores:

- Bethesda store anchors a walkable downtown shopping area. Rockville store is in a strip mall.
- The Bethesda store earned **15% more** than Rockville in one year and made **20% more per sq. ft.**
- People stay longer, spend more and are more likely to hang out in Bethesda.



Bethesda store

How to Grow and Maintain Rural Character: Three Broad Goals

1. **Support the rural landscape** by creating an economic climate that enhances the viability of working lands and conserves natural lands.
2. **Help existing places thrive** by taking care of assets and investments such as downtowns, Main Streets, existing infrastructure, and places that the community values.
3. **Create great new places** by building vibrant, enduring neighborhoods and communities that people, especially young people, don't want to leave.





Smart growth in a rural community: How could it work in the landscape?

1. Support the Rural Landscape

- Creating an economic climate that enhances the viability of working lands and conserves natural lands is the first step
- Strategies, tools and policies that support this goal include:
 - Right to Farm policies
 - Agricultural zoning
 - Renewable energy development



2. Help Existing Places Thrive



- Communities can help their downtowns, Main Streets, and other existing places to thrive through:
 - Fix-it first policies
 - Rehabilitating existing structures, like schools
 - Incentives to encourage infill and brownfield redevelopment
 - Updated zoning ordinances and development codes that support compact, walkable development

Supporting the Rural Landscape: Direct Marketing of Rural Products



- Communities can help support the rural economy by promoting rural products in urban areas, like this Farmers' Market in Ithaca, NY.
- Other strategies include:
 - Community Supported Agriculture (CSA)
 - Agritourism
 - Value-added farm and forest products processing

Supporting the Rural Landscape: TDR and Priority Funding Areas



Farm in Montgomery County, Maryland



Silver Spring, Maryland

- Transfer of development rights policies and priority funding areas can direct growth to desired locations while protecting important working and natural lands, like in Montgomery County, Maryland (pictured here).

Helping Existing Places Thrive: Streetscape Improvements

Before



After



- Streetscape improvements on Main Streets like in Victor, Idaho (pictured here) can help lower traffic speeds and provide parking to support local businesses.

Supporting the Rural Landscape: Investing in the Farm Economy

- Yolo County, California is a largely agricultural county on the edge of a major metro area, important for local and state agricultural economy
- Pursued farmland preservation through:
 - Marketing of locally grown and organic produce (“Capay Valley Grown”)
 - Right to farm ordinance
 - Land trust involvement in conservation efforts



Helping Existing Places Thrive: Historic Preservation



- Renovating existing buildings, like the James Dean House in Rosemont, New Jersey, can help preserve a community's historic assets.

What future do you Envision?

- Learn more about our work and issues
www.Envisionmn.org
- Become a member – support our work
- Volunteer! Many opportunities to become involved