

WealthWorks

Cheryal Lee Hills, Executive Director

Dawn Espe, Regional Development Planner

Made possible by funding from MN
Department of Ag Good Food Access Fund

How did we get here?



FORD
FOUNDATION



THE ASPEN INSTITUTE



YELLOW WOOD
associates, inc.

wealthworks





California, Idaho, Oregon,
Washington



Minnesota



Connecticut, Maine,
Massachusetts, New
Hampshire, New York, Rhode
Island, Vermont



Alaska, Arizona, California,
Colorado, Hawaii, Idaho,
Montana, Nevada, New
Mexico, Oregon, Utah,
Washington, Wyoming



Arkansas, Louisiana,
Mississippi, Oklahoma,
Tennessee, Texas



Kentucky, North Carolina,
Ohio, Tennessee, Virginia,
West Virginia



What is WealthWorks?





IMPROVING LIVELIHOODS



MULTIPLE FORMS OF CAPITAL





Identifying Assets





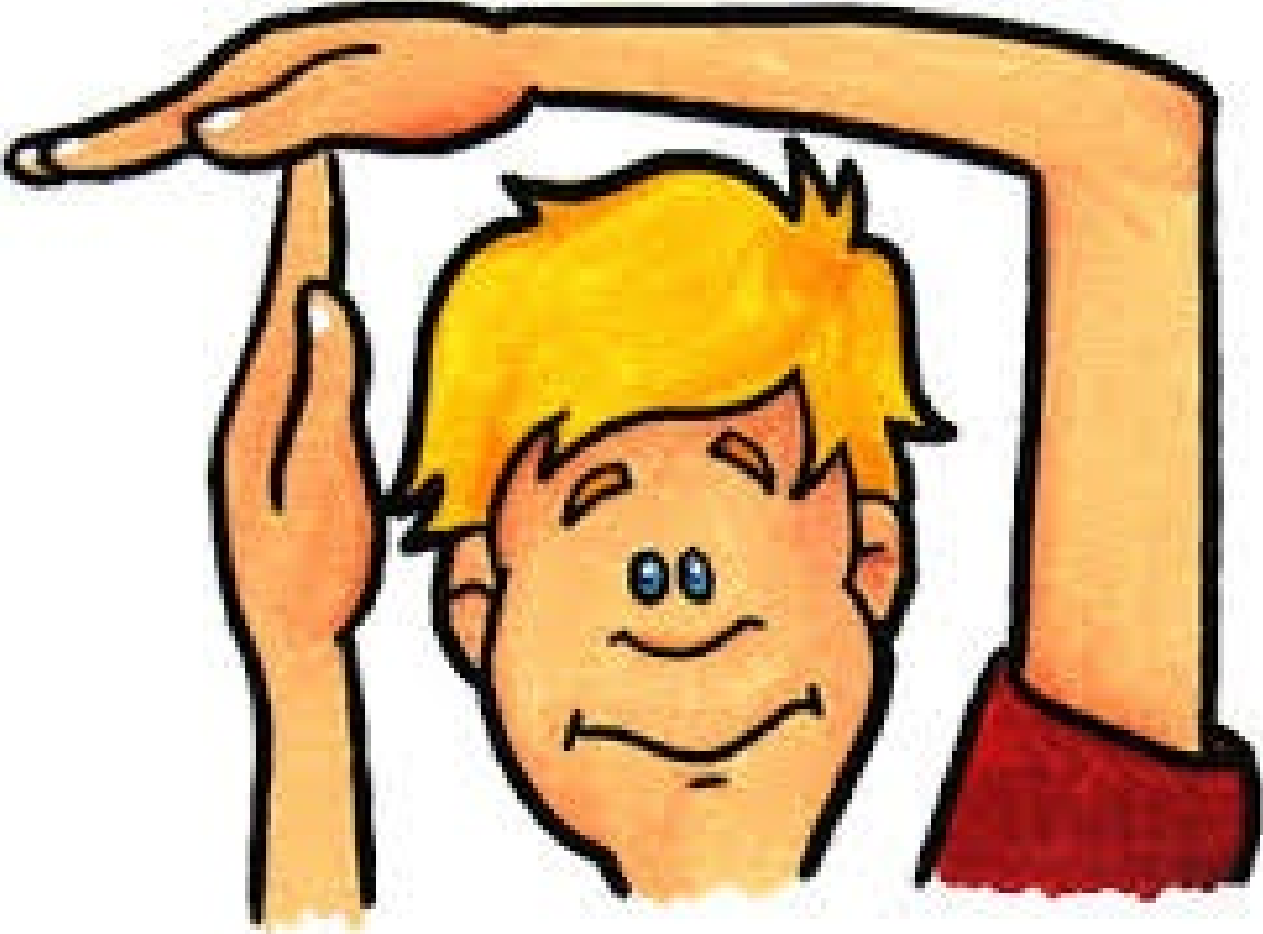
A PLACE OF PROSPERITY

creating a sustained shift in appalachia





TIME FOR A BREAK



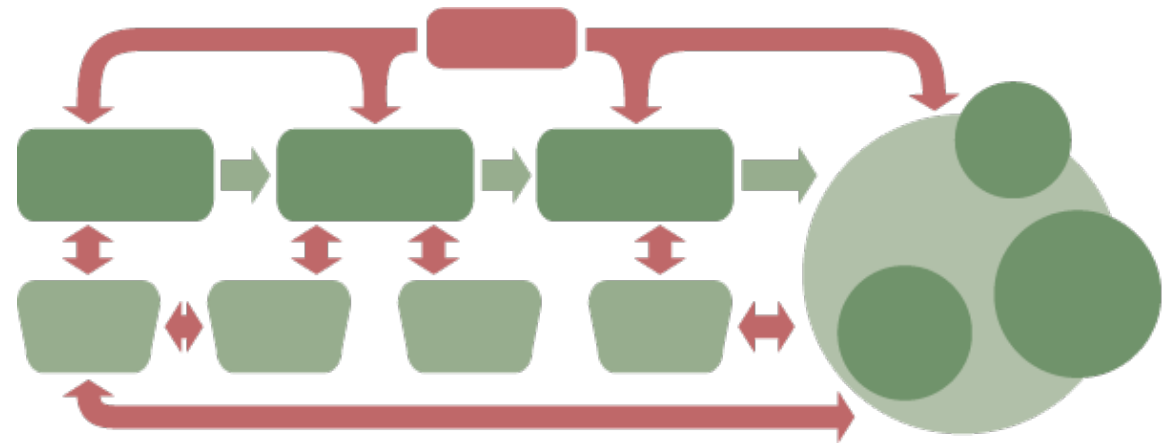
WealthWorks Value Chains vs. Supply Chains

Traditional Supply Chain

- Chain starts with producer supply
- Measured by net income produced
- Everyone is in it for him/herself
- Power determines who gets paid how much for their role
- Participants try to pass on costs to others within or outside of chain
- Tries to influence policy to create advantage and maximize short-term income

WealthWorks Value Chain

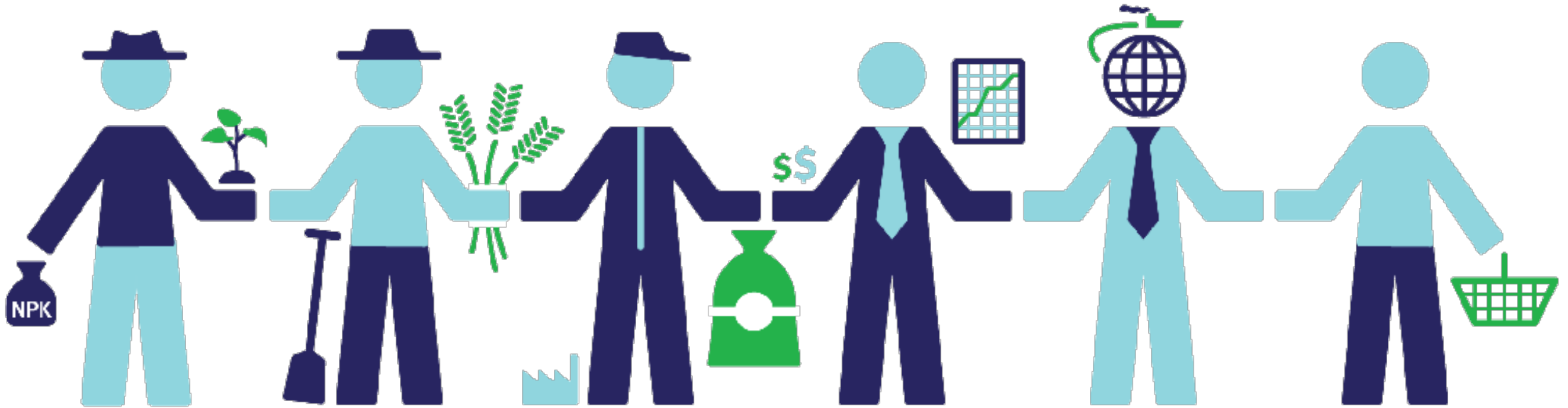
- ➔ • Chain starts with consumer demand
- ➔ • Measured by wealth created/retained
- ➔ • Everyone is in it together
- ➔ • Intentionally balances mutual benefit of all in chain
- ➔ • All known costs are considered and addressed
- ➔ • Tries to influence policy to level the playing field and maximize long-term and widely shared wealth



Mapping Value Chains



VALUE CHAINS



Potato Chips Value Chain



Evaluating Community Capitals

-Which capitals have the most assets and eval opportunities?/
Least?

-How might you be able to build more assets within those community capitals?



Thanks!

For more information-

Website- www.wealthworks.org

Resources, contact info, location and
specialty of hubs, videos